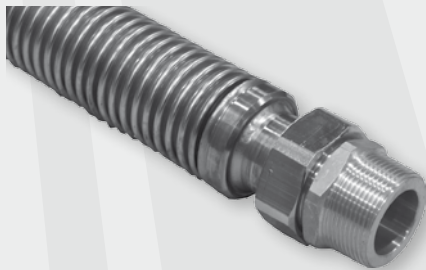


TANK ACCESSORIES

CORRUGATED CONNECTION PIPE FOR VOLUME EXPANSION



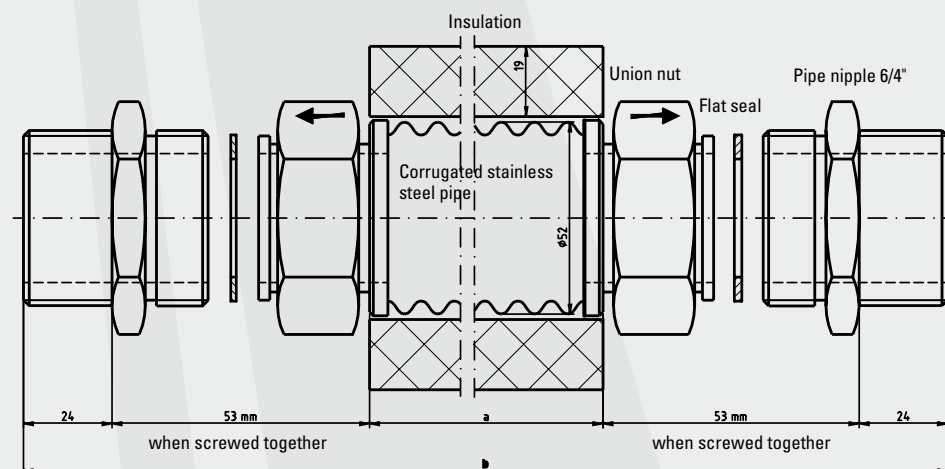
PVS corrugated connection pipe

The corrugated pipe is used to connect 2 tanks and may only be installed in a horizontal position with no sagging (avoid thermosiphon action)!

Guide plates are included in the scope of delivery. The pipe nipples should be sealed properly with hemp and sealing compound! Including 19 mm rubber insulation. Transmission capacity up to 50 kW.

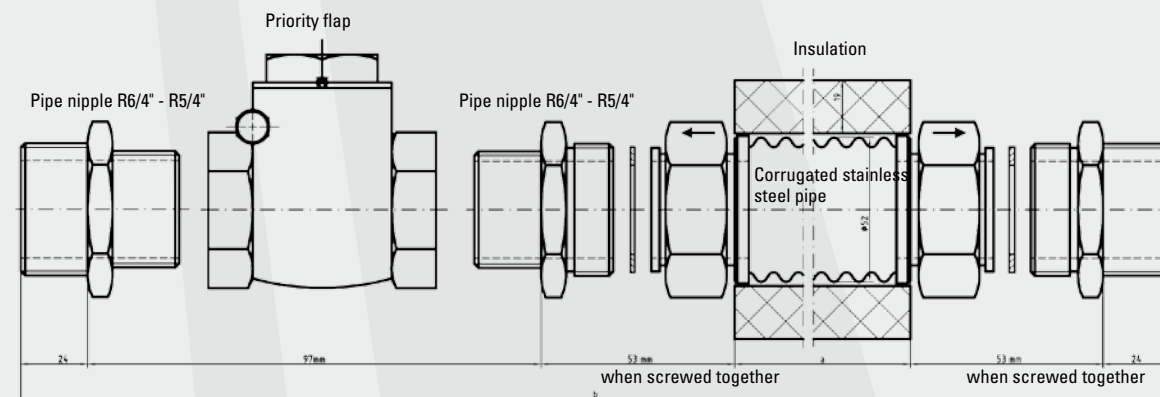
Specifications

Corrugated pipe	Stainless steel 1.4404, DN 40, wall thickness 0.5 mm
Union nut	Nickel-plated brass, stainless steel neck, SW 56
Flat seal	Klingerit
Pipe nipple	Brass, SW 50, G 1½" on R 1½"



Type	PVS-K	PVS-L
Item no.	1620025	1620027
Application	up to 1000 l	up to 1500 l
Dimension a	approx. 846 mm	approx. 1196 mm
Dimension b	approx. 1000 mm	approx. 1350 mm

CORRUGATED CONNECTION PIPE INCLUDING PRIORITY FLAP



Type	PVS-K-VK	PVS-L-VK
Item no.	1620026	1620028
Application	up to 1000 l	up to 1500 l
Dimension a	approx. 773 mm	approx. 1123 mm
Dimension b	1000 mm	1350 mm