

COLLECTOR PFM + PFM-G

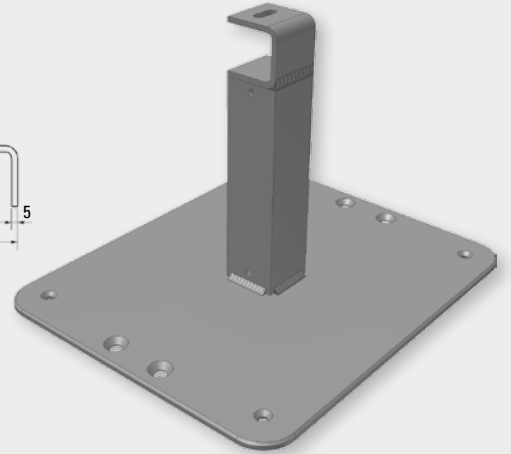
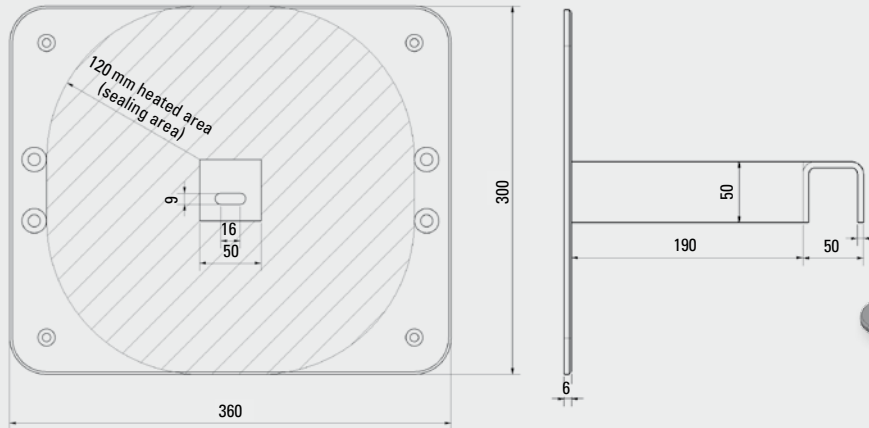
BITUMEN FLANGE PLATE FOR BITUMEN ROOF (HEIGHT 240 MM)

Description

For freestanding installation on bitumen and elastomer roofs; also suitable for flat roofs.

Caution

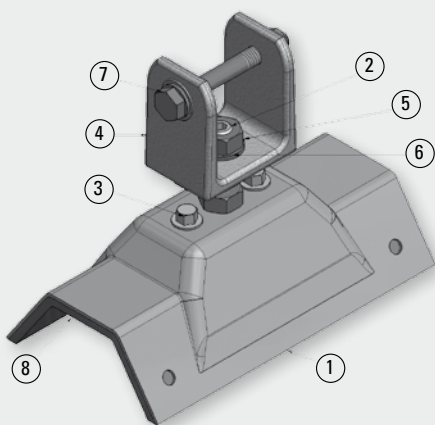
- The plates must be screwed into a member capable of bearing the required static load (generally rafters or concrete).
- Once installed, the plates have to be sealed to the roof sheet material (at least 120 mm). Only then can the collector be installed.



Specifications

Qty.	Designation	Material	Qty.	Designation	Material
1	Flange plate H = 240	hot-dip galvanised steel	1	Hexagon head bolt DIN 933 M8x25	Niro A2
4	10 x 100 mm / TX-40 screws	Galvanised steel	1	DIN 934 M8 hexagon nut	Niro A2
4	6 x 40mm / TX-25 screws	Galvanised steel	1	DIN 125A M8 washer	Niro A2
Maximum load-bearing capacity (only on substrate of sufficient strength)			≤ 10° pitch		
Loading		Pressure	200 kg/flange plate		
		Tension	100 kg/flange plate		

PROFILED SHEET METAL BRACKET FOR PROFILED SHEET METAL OR CORRUGATED SHEET METAL



Description

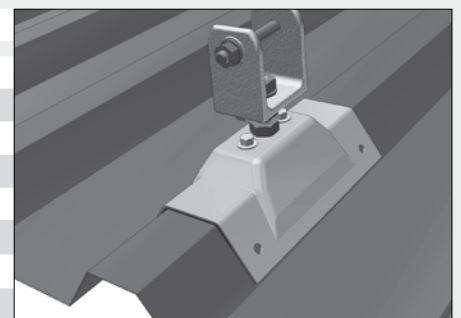
For parallel and freestanding installation on profiled or corrugated sheet metal. The console is installed above the mounting screws of the profiled or corrugated sheet metal. The two sealing screws are first screwed in and the stud is then screwed directly onto the underlying mounting screw of the sheet. The sealing is done before the console is installed using the sealing pads supplied. The sections are fixed to the section connectors on the console.

Caution

- The console must be ordered to fit the relevant profiled or corrugated sheet metal.
- The mounting screws supplied with the console must be appropriate in type and length for the particular roof construction.
- The data sheet has to be filled out completely.

Specifications

No.	Designation	Material
1	Console	Stainless steel 1.4301
2	M10x70 threaded stud	A2 stainless steel
3	Screws according to substrate	A2 stainless steel
4	Profile joiner	Aluminium
5	M10 hexagon nut	A2 stainless steel
6	M10 washer	A2 stainless steel
7	M8x65 hexagon head bolt	A2 stainless steel
8	Sealing pad	EPDM



COLLECTOR PFM + PFM-G

Maximum load-bearing capacity (only on substrate of sufficient strength)	≤ 30° roof pitch	> 30°–45° roof pitch	
	Pressure	200 kg/console	100 kg/console
Loading	Tension	50 kg/console	50 kg/console

A diagram of the substrate and how it is laid is an absolute requirement

Spacings of the outermost screwing points to the ridge, gable board or eaves are to be given!

Caution: It is only possible to produce brackets if the data sheet is completed in full.

Project:

Customer: _____ Snow load ____ kN/m²
 Order: _____
 Location: _____
 Roof pitch: ____ °

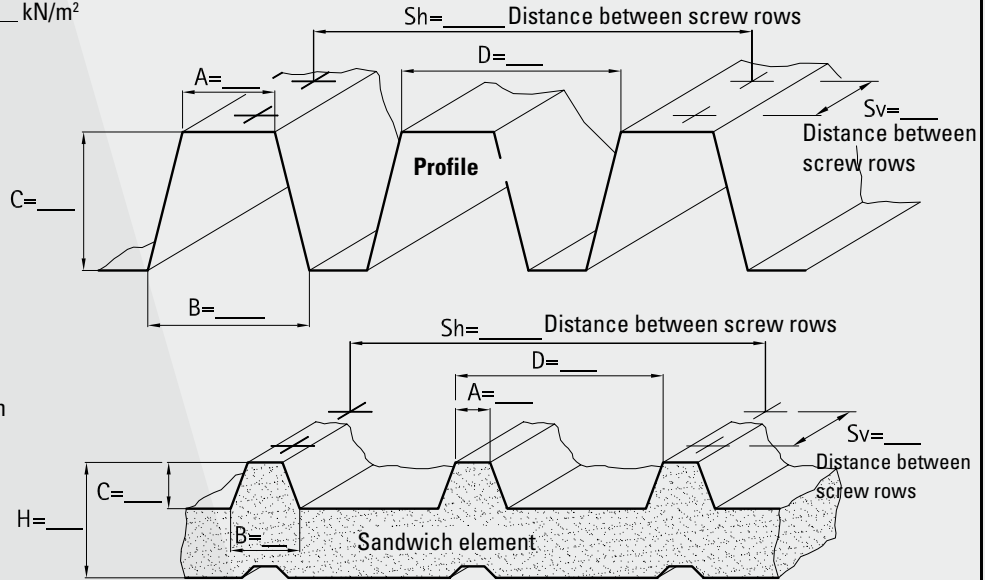
Roofing:

Manufacturer: _____
 Type: _____

- Profiled sheet metal
- Sandwich element
- Other Shape

Frame:

- Steel**
 - Wall thickness 2-6 mm
 - Wall thickness 6-12 mm
- Wood**
 Batten cross-section _____
- parallel
- transverse
- diagonal



Date: _____ Signature: _____

Tel.: + 43 5333 201-0
 E-mail: office@tisun.com
 Last change: SG, 16/10/07, no. of brackets, horiz. dimension added
 Path: G:/PRJ/TECHNIK/Kollektor/FA/FA - Befestigungen/Trapezblech
 Dr. no.: Profiled sheet metal - Data sheet

Variant **B**

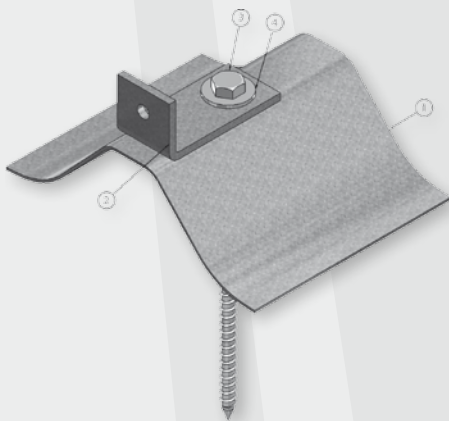
Number of brackets required (to be completed by TiSun engineering!)
 Support brackets: _____ Intermediate brackets _____

Signed: Wi
 Custom:
 Order:

Designation:
Data sheet for profiled and corrugated sheet metal roof

Scale: not to scale

CORRUGATED CEMENT ASBESTOS CALOTTE (FOR 5 OR 8 CORRUGATIONS)



Description

For parallel and freestanding installation on corrugated cement asbestos roofs.

The calotte is screwed to the load-bearing wooden frame using the mounting screws and then sealed with sealant. The parallel sections are then screwed to the angle bracket that has been bolted to the console.

Caution

- Various sizes: Profile 5 → 5 corrugations per metre; profile 8 → 8 corrugations per metre
- The sealant required is supplied with the brackets.
- The frame screws must be screwed into a member capable of bearing the required static load (generally rafters). Longer frame screws are necessary if the roof construction is higher (e.g. roof insulation).
- The data sheet has to be filled out completely.

Specifications

No.	Designation	Material
1	Calotte	Hot-dip galvanised steel
2	Angle bracket for calotte	Hot-dip galvanised steel
3	Ø10 x 240 hexagon head wood screw (standard)	Galvanised steel
4	Ø10 washer	Galvanised steel

