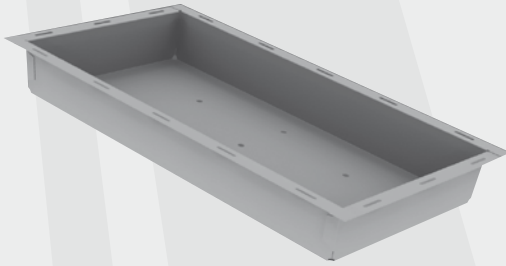


COLLECTOR PFM + PFM-G

GRAVEL PAN FOR GRAVELLED FLAT ROOFS



Description

For freestanding installation of PFM- and PFM-G collectors on flat roofs with a roof pitch of max. 5°. Before gravelling, an appropriate number of pans are arranged on the roof and screwed to the collector frame. The pans are filled with suitable gravel (e.g. screened and washed gravel 16/32) before mounting the collectors.

Caution

- An underlay fleece (TiSUN accessory) has to be used on foil-covered roofs or other roofing materials that could be damaged by the gravel pans
- If the roofs are already gravelled, the areas for the gravel pans have to be cleared on site
- The gravel pans have to be filled as soon as possible after installation of the collector frame, to prevent the collectors from tilting, lifting off etc.

Specifications

Designation	Gravel pan for gravelled flat roofs
Item no.	1410436
Material	Galvanised steel plate (2 mm)
Dimensions	Approx. 1650 x 900 x 210 mm
Filling volume	Approx. 225 litres
Filling weight	Approx. 400 kg (with screened and washed gravel, 16/32)
Standard mounting components	1 x threaded stud, DIN 976, form A, galvanised, M10 x 120 mm 4 x hexagon nut, M10, galvanised, with permanently mounted disk, class 10

Note: Special mounting components on request!

