

COLLECTOR PFM + PFM-G



RAFTER ANCHOR FOR ROOF TILES, HEIGHT-ADJUSTABLE

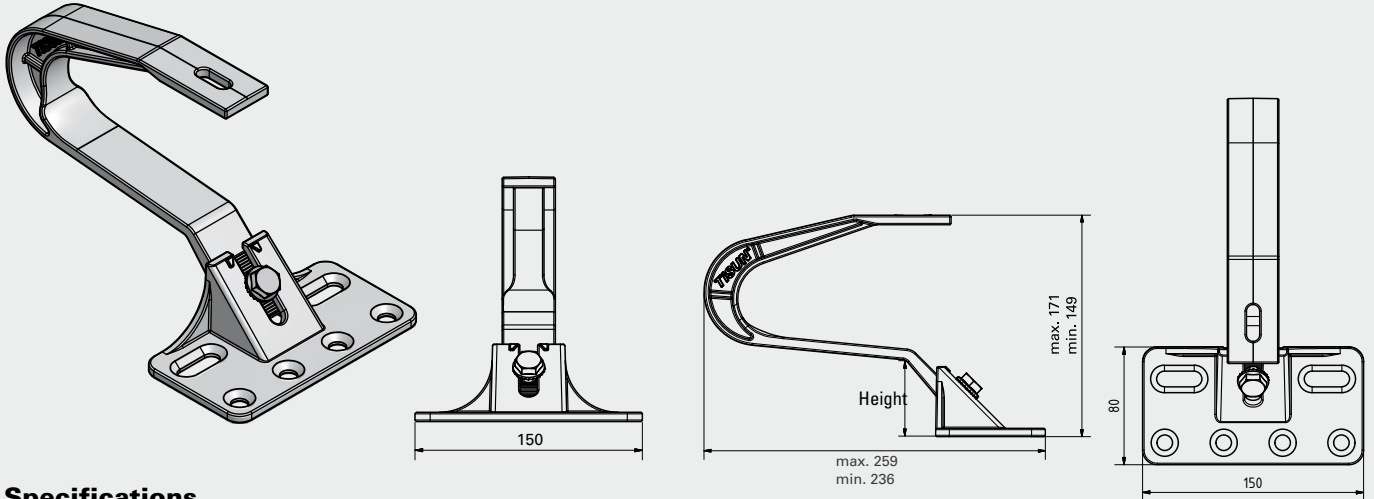
Description

For parallel on-roof and freestanding installation on tiled roofs with a roof pitch of at least 5° and an area loading greater than 30 kg/m². Can be used for the following types of tile (list not complete): Plain tile, concrete tile, pan tile.

Caution

- The anchors must be screwed into a member capable of bearing the required static load (generally rafters or concrete).

- DIN 1055 compliant
- Roof batten, at least 30 mm
- The gap between rafter anchor and top edge of tile must be at least 3–5 mm. Under no circumstances may the rafter anchor be in contact with the tile (if the overall height of roof batten and tile do not match, the lower height must be packed out)



Specifications

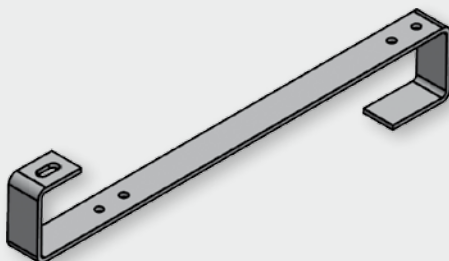
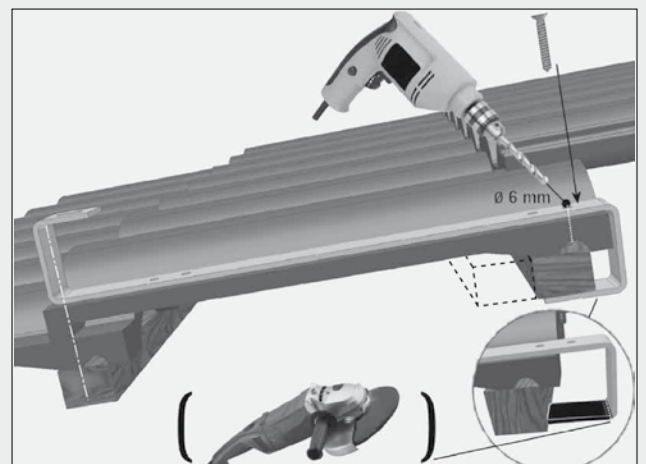
Base plate	150 x 80 x 5 mm
Height	40-60 mm
Material	Stainless steel, screws Slit T-40 / 10 x 120

Maximum load-bearing capacity (only on substrate of sufficient strength)		≤ 30° roof pitch	> 30°–45° roof pitch
Loading	Pressure	200 kg / rafter anchor	150 kg / rafter anchor
	Tension	100 kg / rafter anchor	100 kg / rafter anchor

ROOF HOOK FOR ROOF TILES

Description

For the installation of collector modules parallel to the roof line (PFM-S and PFM-W) on tiled roofs with a roof pitch of at least 15°. The hooks are hung over the tiles. Should the underlying roof batten be too thick, the lower part of the top hook is sawn off. To ensure that the hook cannot be lifted, a hole is drilled through the tile and the hook held by the screw supplied.



Specifications

Dimensions	Length 420 mm / Height above 65 mm / Height below 65 mm / Thickness 4 mm
Material	Stainless steel 1.4301
Thickness	4 mm
Screws	Stainless steel 6 x 40

Maximum load-bearing capacity (only on substrate of sufficient strength)		≤ 30° roof pitch	> 30°–45° roof pitch
Loading	Pressure	75 kg/roof hook	100 kg/roof hook
	Tension	25 kg/roof hook	25 kg/roof hook